

FBP 24 / FBP 26

Truck-mixer pump



Vertical reach		23.8 m / 25.8 m	78 ft / 85 ft
Concrete output	max.	61 m ³ /h	
Pressure on concrete	max.	71 bar	
Nominal volume		7 m ³	



RECORD BREAKING ENGINEERING

Truck-mixer pumps FBP 24 and FBP 26

Flexible transport and placing

Whether rural or urban: the truck-mixer pumps (FBP) by SCHWING-Stetter are ideal for transporting and placing smaller amounts of concrete and well suited for covering order peaks. Thanks to its small footprint, the FBPs offer an optimal solution for construction sites in narrow streets or inner-city areas. The FBP by SCHWING-Stetter: the flexible addition to any fleet.

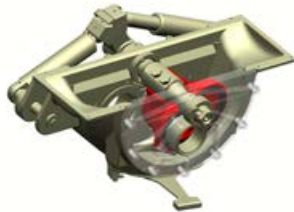


Unique operating comfort

Greater comfort and higher occupational safety: the entire FBP is operated from the ground, except for the cleaning of the mixing drum. All control elements have been combined ergonomically with two central control units. For greater comfort and shorter set-up times.

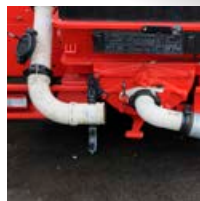
Low-maintenance and easy cleaning

Specifically designed for truck-mixer pumps: the compact S-ROCK. Its legendary robustness and easy cleaning reduce the maintenance costs and cleaning time to an unmatched low.



Boom or hose

The rotating outlet (optional) expands the FBP applications. In addition to the classic concrete placing via the boom, the truck-mixer pump will also pump concrete or screed via hose pipes to cover the areas the boom cannot reach. For more flexibility and higher machine utilisation.



Manoeuvrable and compact

The short rear overhang of the FBP makes manoeuvring at the job site easier and decreases the risk of damage in rough terrain. The small outrigger footprint ensures high set-up flexibility whilst ensuring safe support even on the most restricted construction sites. The large rear outriggers can even be used without pads in many cases.



FBP 24 / FBP 26 Truck-mixer pump



Proven boom construction

The RZ-folding boom consists exclusively of straight boom elements without any bends or kinks resulting in a small boom width, low boom weight and higher torsional stiffness. The Z-folding final boom section and its 264° opening angle increases flexibility and enables concrete placing right up to the FBP.



All included

Packing more equipment into a truck-mixer pump makes it much more flexible and able to serve a wider variety of situations. Therefore the FBP 24 and FBP 26 provide numerous storage options. Hoses up to 5 m in length can be safely carried along in the aluminium trays mounted on both sides, and in the tool box on the right side is space for couplings, tools and other accessories.



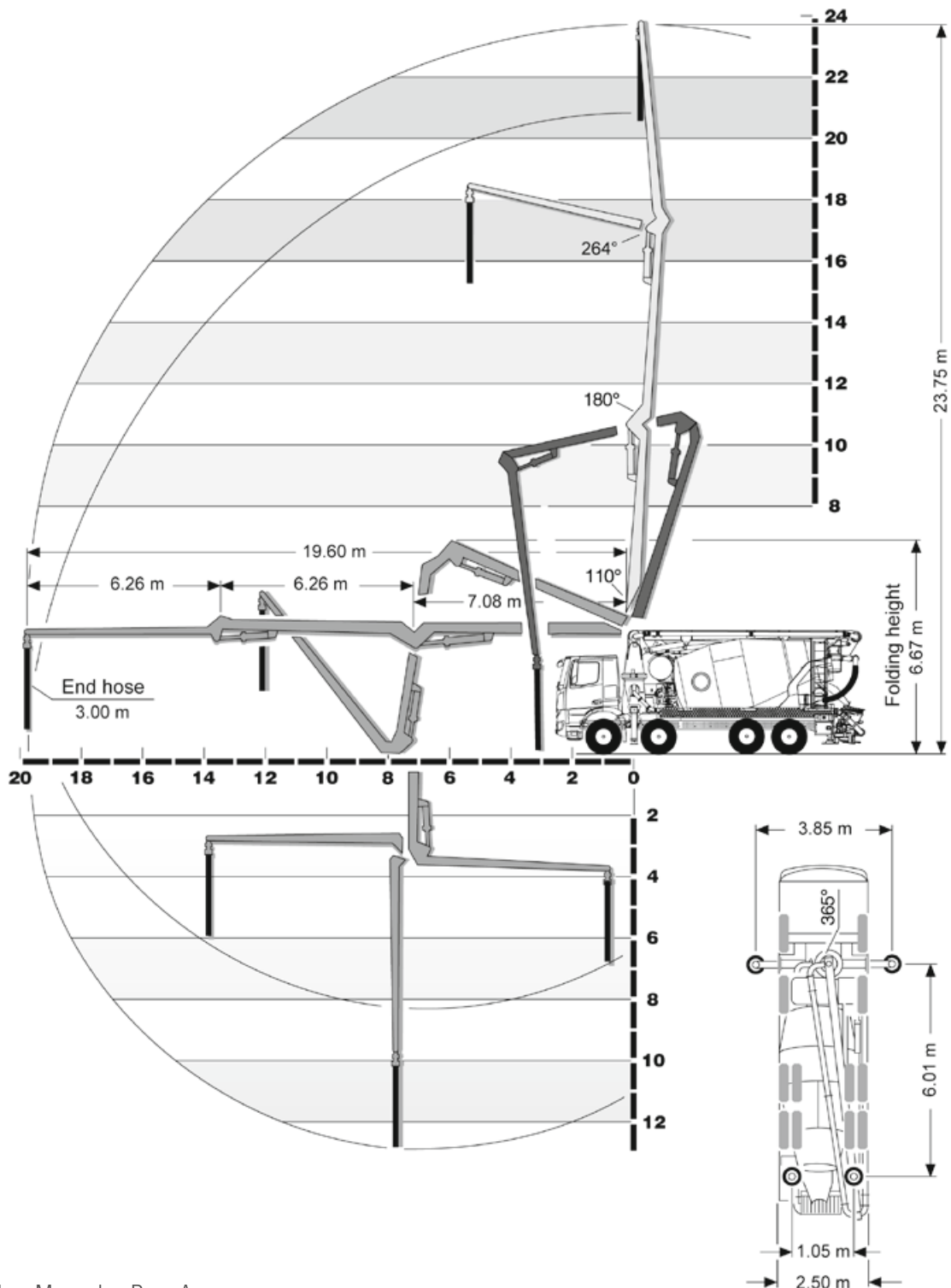
Easy to service

Daily filling and emptying of the water box can be carried out easily and safely from the ground. Changing the pumping piston can also be done in no time: free access to the water box allows quick work and ensures short downtimes.



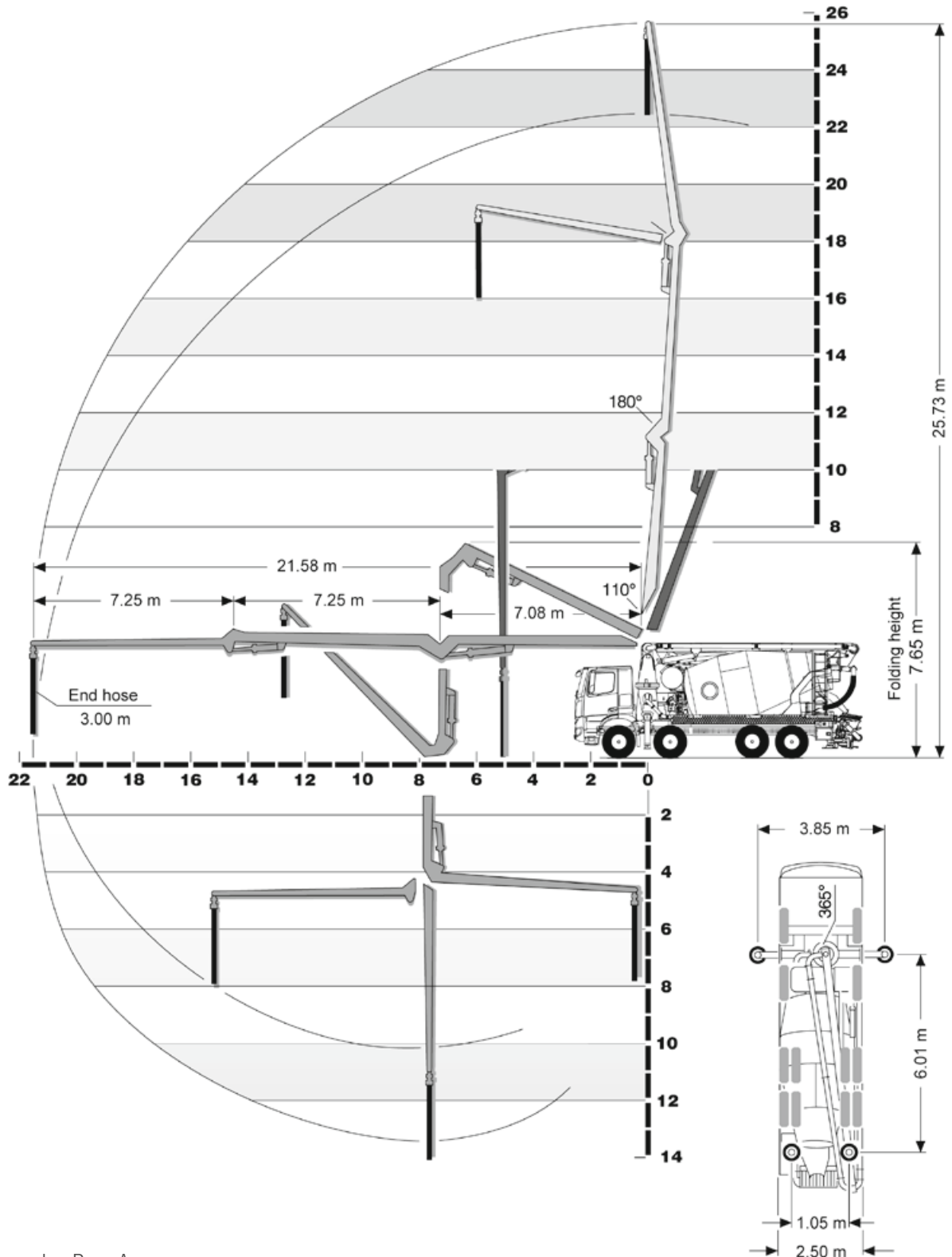
FBP 24 / FBP 26 Truck-mixer pump

Working range FBP 24



mounted on Mercedes-Benz Arocs

Working range FBP 26



mounted on Mercedes-Benz Arocs

FBP 24 / FBP 26 Truck-mixer pump

Technical data

Performance		FBP 24	FBP 26
Pump kit		P1020	P1020
Delivery cylinders	mm	200 x 1,000	200 x 1,000
Concrete output max.	m ³ /h	61	61
Pressure on concrete max.	bar	71	71
Stroke rate max.	1/min.	32	32
Concrete valve		S-ROCK	S-ROCK
Hydraulic system			
Design		open system	open system
Hydraulic tank	l	325	325
Drum			
Type		AM 7 FHC3	Am 7 FHC3
Nominal volume	m ³	7	7
Compressed air water tank	l	650	650
Boom			
Delivery line		DN 125 (Option: DN 100)	DN 100
Length of end hose	m	3.00	3.00
Vertical reach	m	23.75	25.73
Reach depth	m	11.64	13.62
Horizontal reach	m	19.60	21.58
Net horizontal reach	m	17.10	19.10
Number of boom sections		3	3
Slewing range		365°	365°
Folding height	m	6.67	7.65
Support			
Outrigger width, front	m	3.85	3.85
Outrigger width, rear	m	1.05 (within vehicle width)	1.05 (within vehicle width)
Outrigger load, front	kN	180	180
Outrigger load, rear	kN	125	125

Equipment & Options

Standard equipment

hydraulic chute adjustment

End hose 3.00 m

Plastic outrigger pads

Floodlight on ladder platform

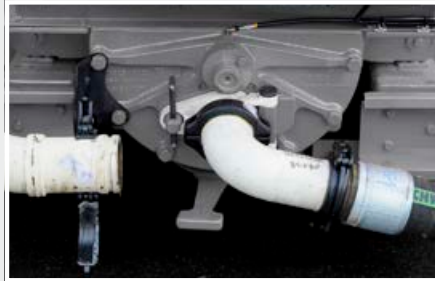
Extension chute (plastic insert exchangeable)

Filling level sensor (switches off the drum when hopper is full)

Selected options



High pressure cleaner



Rotating outlet
(for pumping with hoses)



Concrete shut-off-valve



Oil cooler



Drum cover
(3/4 or full lock)



Admixture system (compressed-air version)

Flexible in use: the covering for hopper



Covering for hopper in position "Own filling"



Covering for hopper in position
"External filling"



Covering for hopper in position
"Own + external filling"

SCHWING-STETTER ALWAYS CLOSE TO YOU



SCHWING-Stetter truck-mixer pumps.
Flexible transport and placing.



**SCHWING
Stetter**

SCHWING GmbH
Heerstrasse 9-27 · 44653 Herne, Germany
Fon +49 23 25 - 987-0 · Fax +49 23 25 - 72922
www.schwing-stetter.com · info@schwing.de

Stetter GmbH
Dr.-Karl-Lenz-Strasse 70 · 87700 Memmingen, Germany
Fon +49 83 31 - 78-0 · Fax +49 83 31 - 78 275
www.schwing-stetter.com · info@stetter.de

Subject to technical and dimensional modifications. Illustrations are non-binding. The exact standard specification, the scope of delivery and the technical data are detailed in the offer.